



# Aligned Development Strategies, Inc.

Phone: 202-659-2807

Fax: 202-659-2810

[info@goADSI.com](mailto:info@goADSI.com)

[www.goADSI.com](http://www.goADSI.com)

# About us

**ADSI is an Information Technology and Management Consulting firm that works to solve our clients' business challenges through governance support and software solutions.**

**CMMI-DEV Maturity Level 3  
8(a) STARS II  
Microsoft Certified Partner**

***“Administering Dependable Services with Integrity.”***

# Focus Areas

IT Governance

Cyber Security

SharePoint/Office 365

Project & Grants  
Management

Agile & DevOps

Training & E-Learning



**Contact Us Today!**

*202-659-2807  
info@goADSI.com*

# SharePoint Server/SharePoint Online for O365

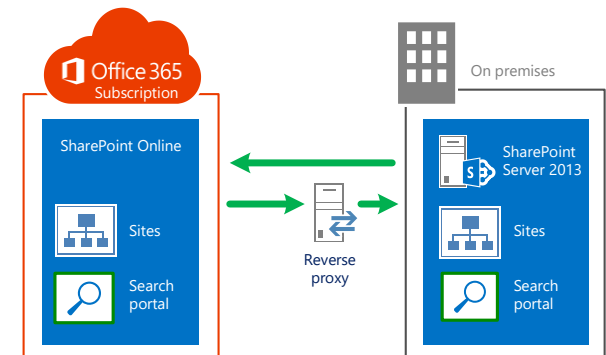
ADSI improves business efficiency via workflow automation, empowers management with actionable information from company data and provides an array of custom Microsoft SharePoint Solutions to support overall business processes:

- Business Intelligence, Data Visualization & Custom Dashboards
- Business Process Assessment & Automation
- Upgrades and Migrations
- Custom Branding & Site Development
- Nintex Workflow and Nintex Forms Solutions
- Customer Relationship Management
- Training
- Enterprise Search and Knowledge Management Solutions

# Implementing SharePoint: Cloud, Hybrid or On-Premise?

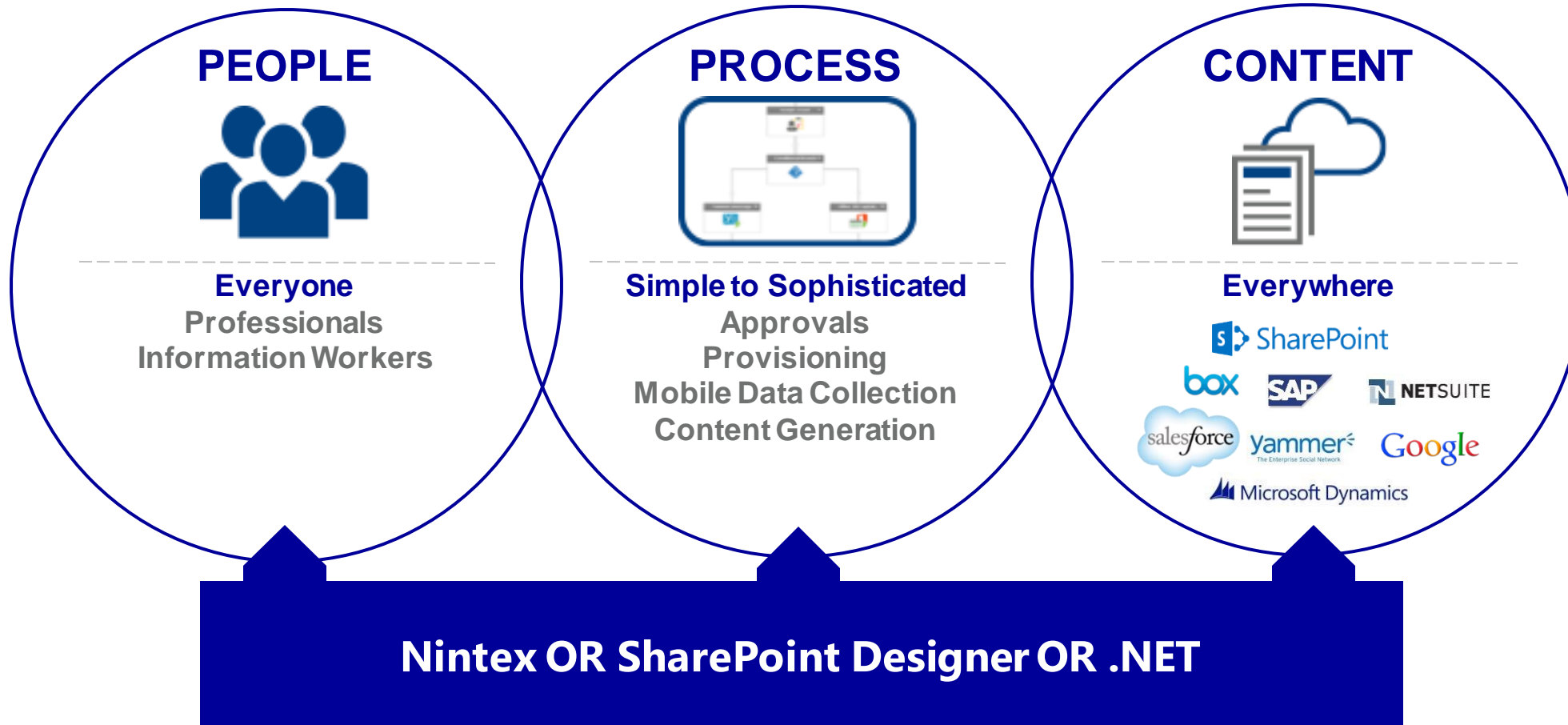
ADSI will optimize your organization's SharePoint implementation. Allow ADSI to assist in all aspects of integration including:

- Integration planning and architecture design
- Selecting the best strategy based on your cloud readiness and business needs
- Farm infrastructure installation, administration and provisioning
- Farm auditing, monitoring and health report generation
- Microsoft Azure design and implementation to include SQL Server and Active Directory installation, configuration, administration and monitoring
- SharePoint Online/Office 365 migration and implementation
- Backup and disaster recovery planning and management
- Patch and upgrade scheduling and management
- Third party tool selection, vetting and integration



# Automating processes between people and content

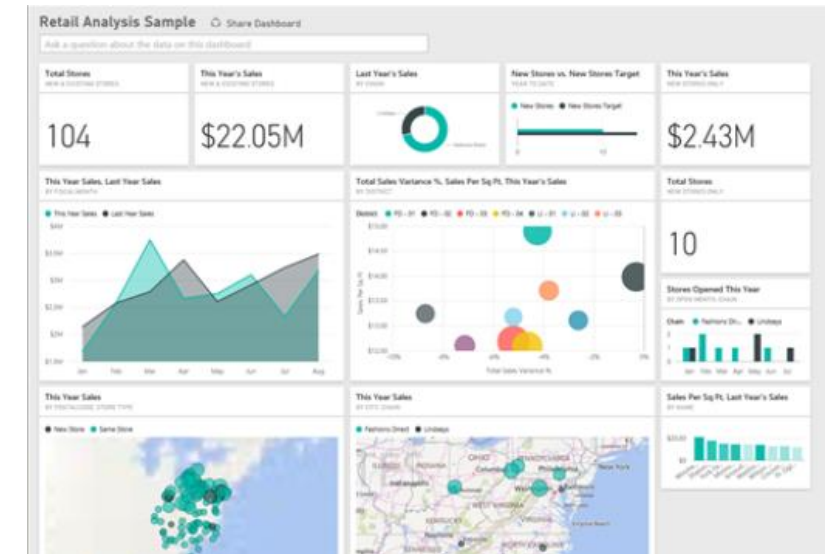
## Greatly improving productivity and control



# SharePoint & Business Intelligence

Key stakeholders and decision makers need access to actionable data and intelligence at their fingertips. Thankfully, ADSI's capabilities in business intelligence and dashboarding will craft a solution for your enterprise that is dynamic, intuitive and flexible:

- ADSI creates reports, scorecards, and dashboards that are informative, intuitive and actionable.
- ADSI will implements tools that allow organizations to manage reports, scorecards, dashboards, and data sources in a central location.

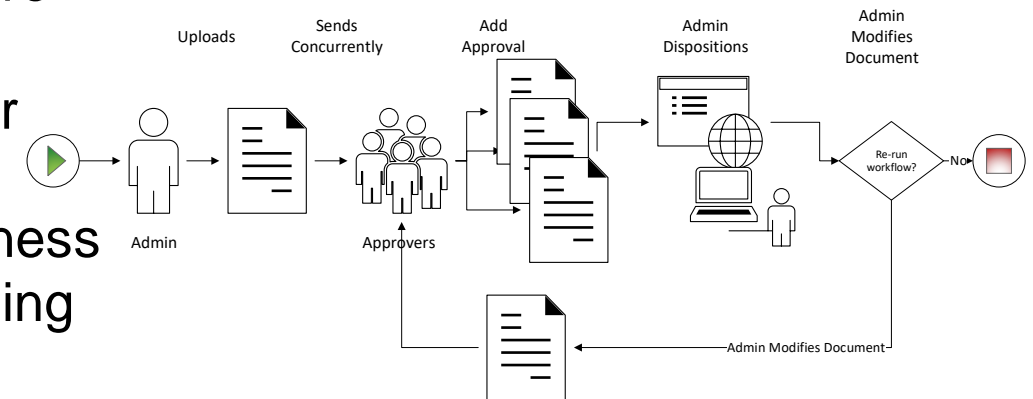




# SharePoint Business Solutions

ADSI helps businesses identify, analyze and automate their common business processes or “workflows” because it leads to greater efficiencies, increased employee production, regulatory compliance and improved knowledge management. ADSI is skilled at delivering these products using:

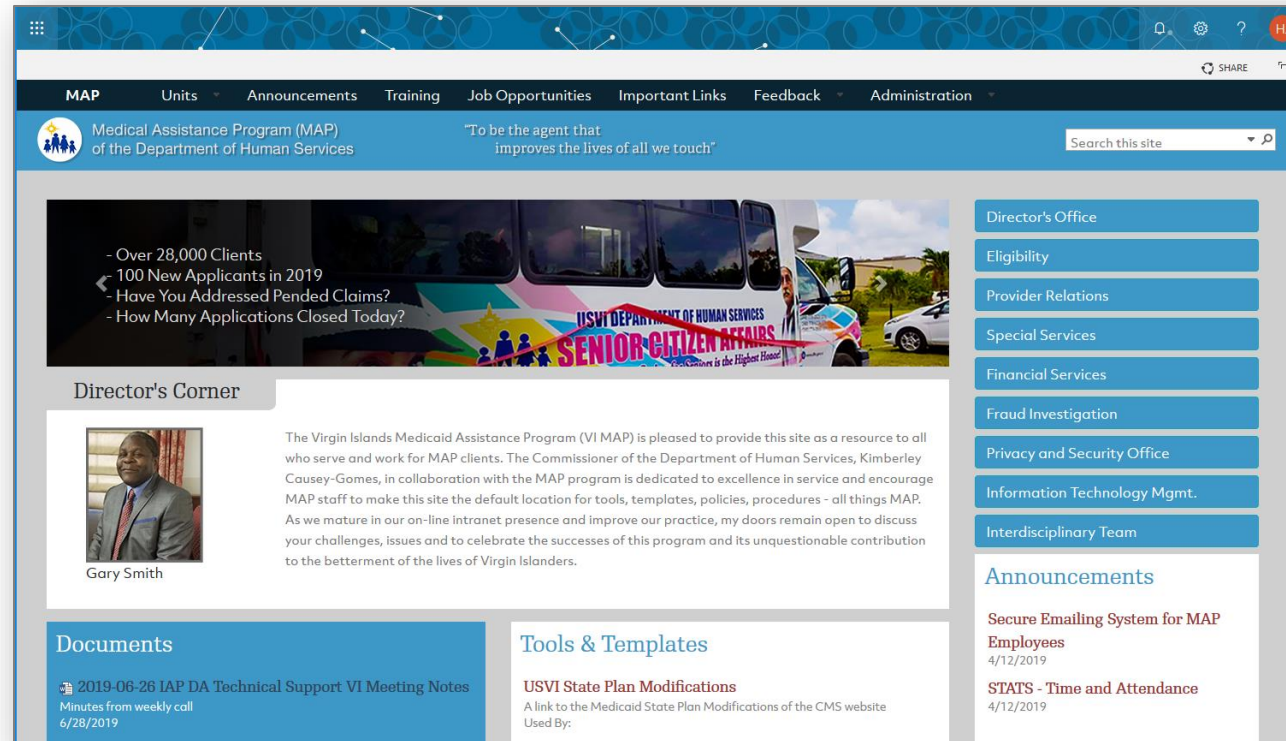
- Custom workflow solutions in .NET and C# that solve complex business challenges
- Microsoft PowerApps, Microsoft Flow and Nintex for intermediate level applications
- SharePoint Designer to solve low to mid-level business application needs that solve the majority of an existing challenge





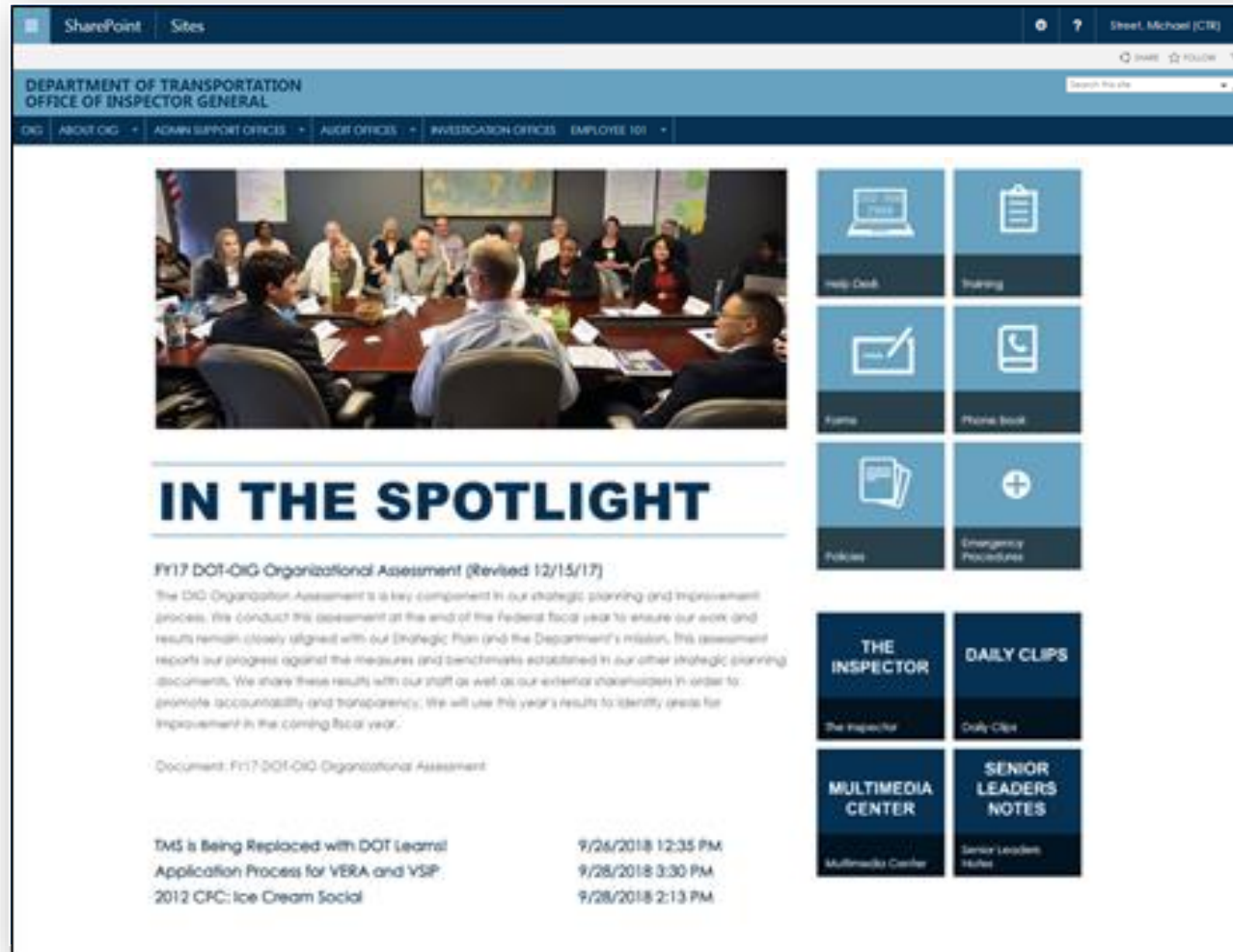
# SharePoint Solution Examples

# Example: Medicaid SharePoint Portal



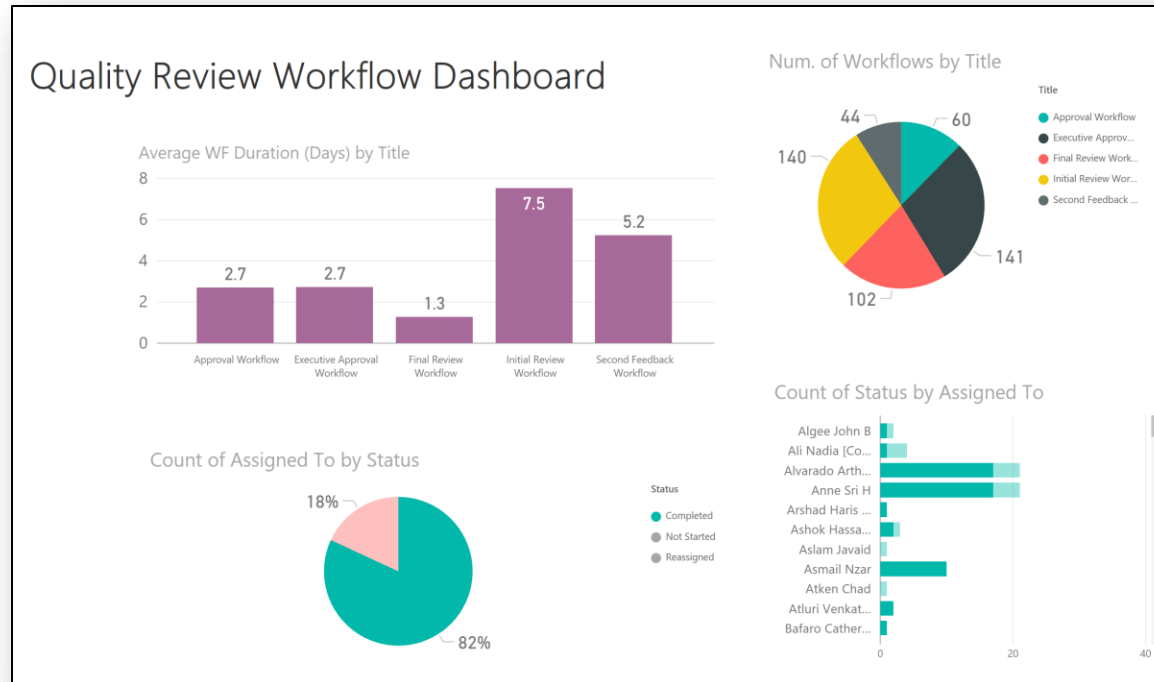
ADSI implemented the US VI, Department of Human (DHS) Medicaid Assistance Program (MAP) Microsoft SharePoint Online/Office 365 Portal. Custom branding was implemented across multiple departments or units to promote ease of navigation, collaboration and adaption of the new portal. Custom workflows were built to automate approval processes on key documents across departments. Power BI was used for data analytics, process monitoring, KPIs and status reporting.

# Example: SharePoint Business Solution



DOT-OIG required ADSI to design and assist in the installation of a new agency intranet on a new SharePoint 2016 farm using existing OIG infrastructure. ADSI provided recommendations to the OIG's network topology to accommodate the new SharePoint 2016 installation. ADSI performed data migration from the OIG's legacy system to the new platform and then assist the agency in testing and verifying proper operation of the new SharePoint 2016 installation after migration.

# Quality Review Workflow Dashboard



## Purpose & Scope

The Quality Review Workflow dashboard is a high-level summary of the time various documents take to complete their review and approval workflows and identifies which task owners have not completed their tasks.

## Data Sources

The dashboard pulls directly from multiple SharePoint lists.

## Tools

Power BI, SharePoint Online

# Risk and Issue Program Dashboard



## Purpose & Scope

The Risk and Issue Program dashboard is a high-level overview of Criticality and Status on all data.

## Data Sources

The dashboard pulls directly from multiple SharePoint lists.

## Tools

SharePoint, SSRS

# PSI Action Items Dashboard



## Purpose & Scope

Provides a snapshot of action items status and statistics within a monthly period.

## Data Sources

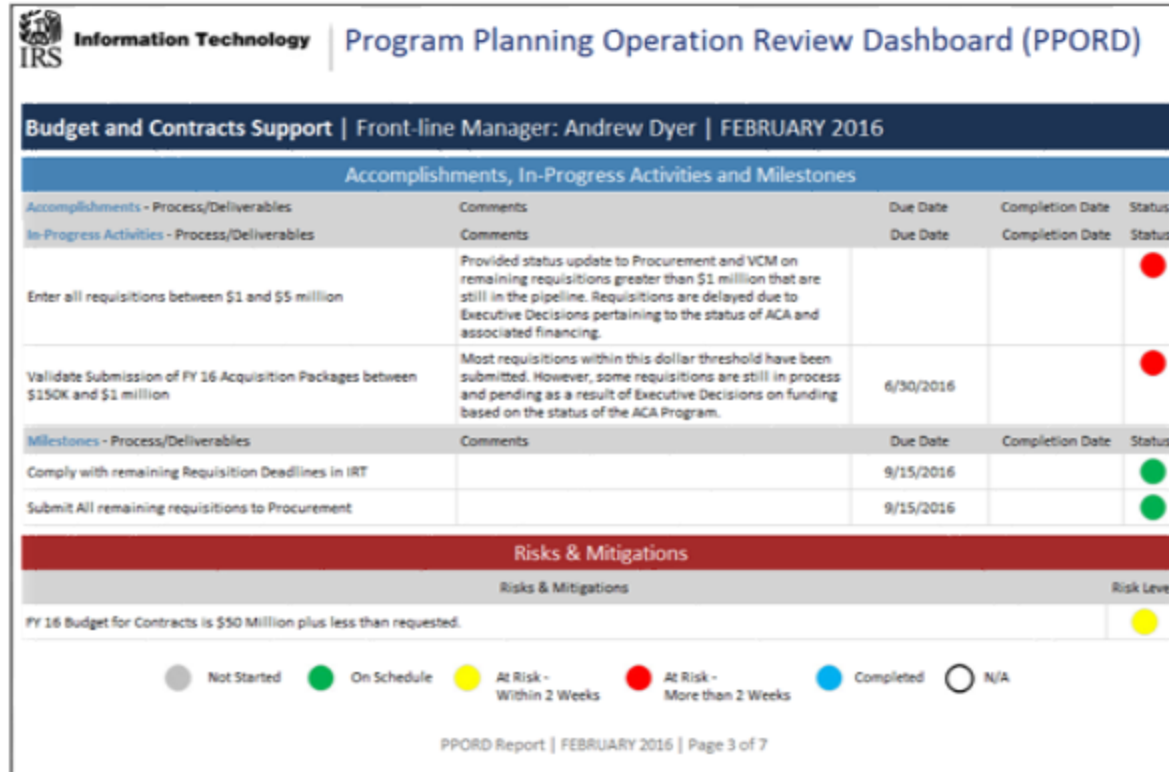
The dashboard pulls directly from a SharePoint list.

## Tools

SharePoint, Excel



# Program Planning Operation Review Dashboard (PPORD)



## Purpose & Scope

Presents status on accomplished, in-progress and milestone activities from multiple teams in a consolidated dashboard.

## Data Sources

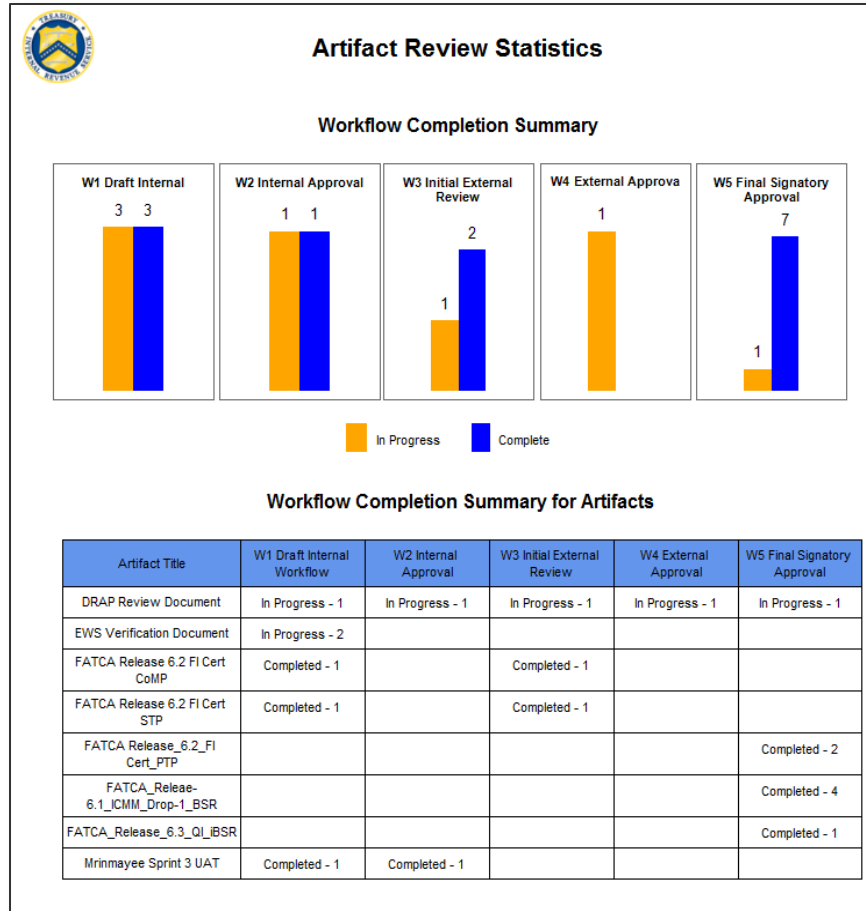
The dashboard pulls directly from multiple SharePoint lists.

## Tools

SharePoint, SSRS



# Artifact Review Statistics Dashboard



## Purpose & Scope

Presents status and statistics on artifacts under review as they progress through multiple phases of review workflows.

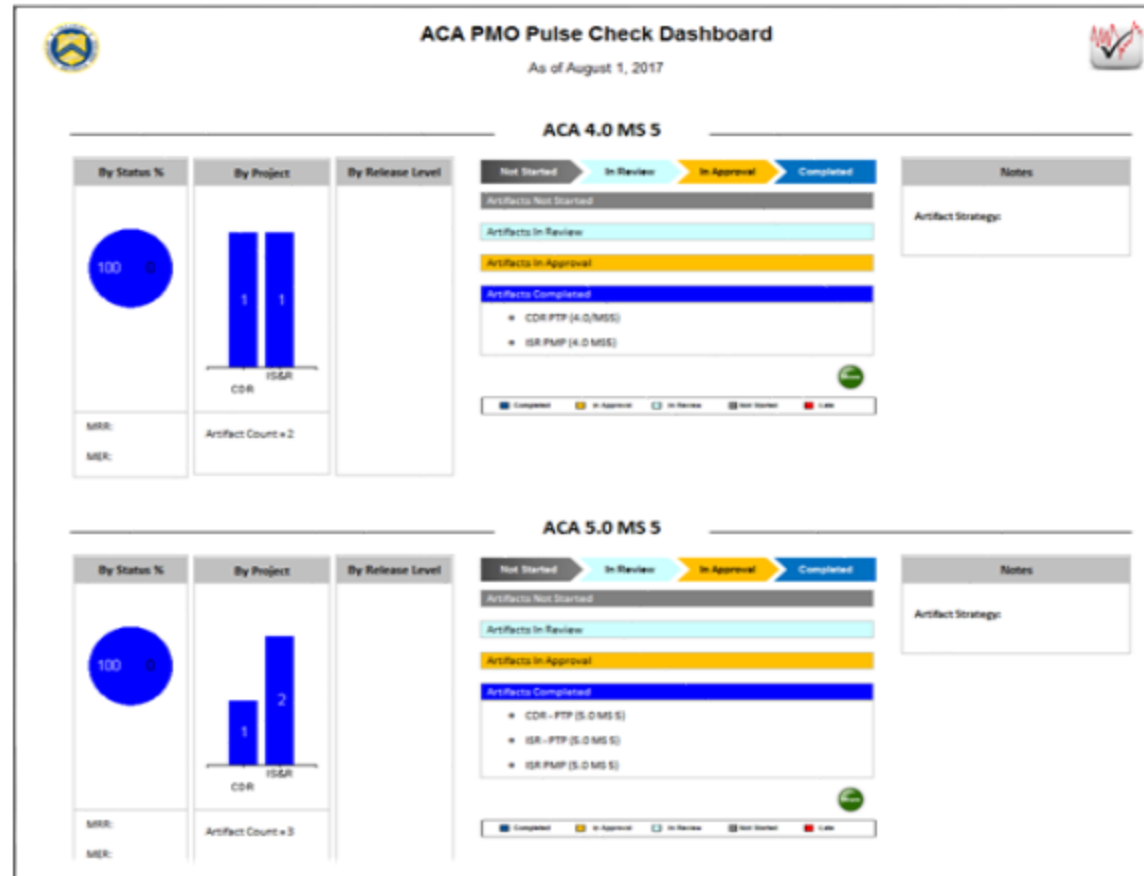
## Data Sources

The dashboard pulls directly from multiple SharePoint lists.

## Tools

SharePoint, SSRS

# ACA PMO Pulse Check Dashboard



## Purpose & Scope

Provides a pulse check on artifacts by milestone and release as they progress through an automated document review process.

## Data Sources

The dashboard pulls directly from multiple SharePoint lists.

## Tools

SharePoint, SSRS

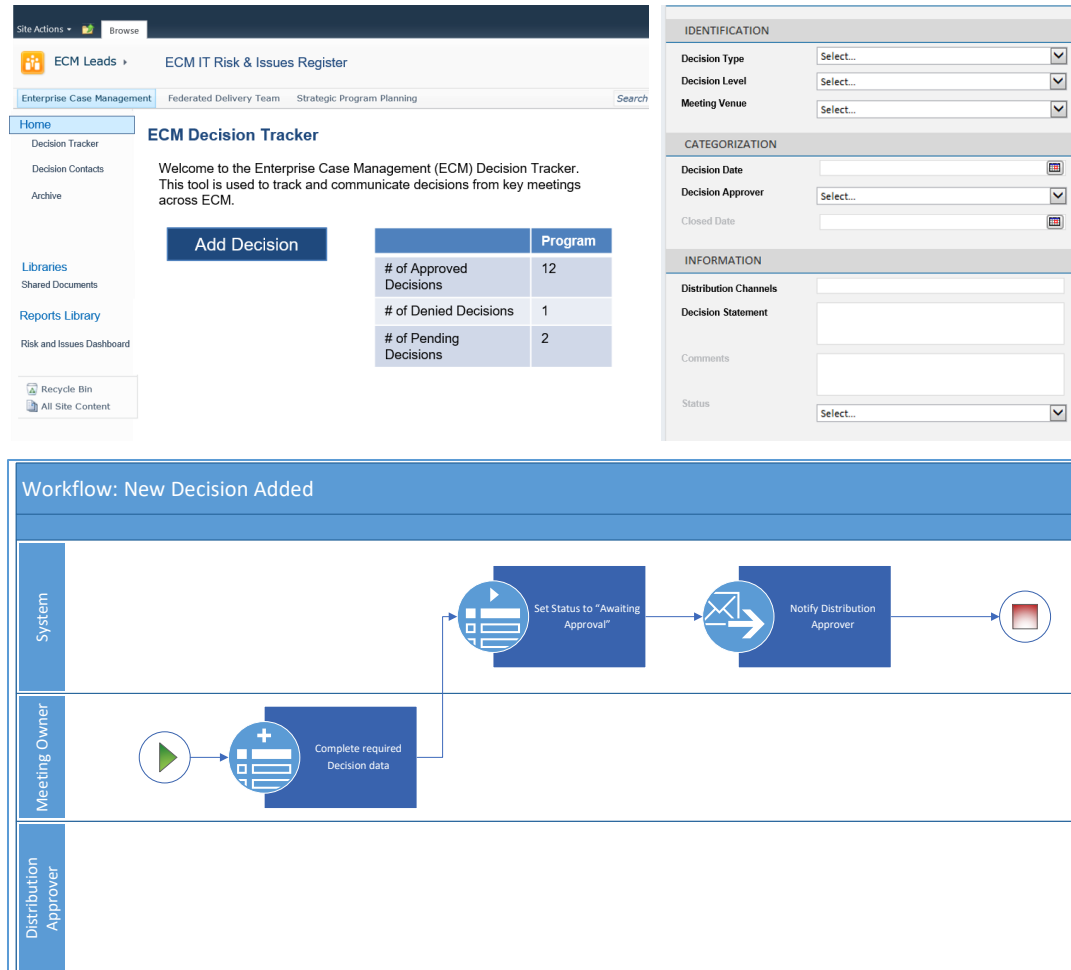
# Example: SharePoint Business Solution



SharePoint is the ideal platform for a collaborative, internal, project-based web-portal. A client required a scalable, reliable set of pages, libraries, lists and supporting workflows to ensure the seamless rollout and integration of a major programmatic change. ADSI implemented multiple SharePoint site collections that leveraged custom development and out of the box features to provide a robust program-level management tool.



# Example: SharePoint Business Solution



The screenshot displays the 'ECM Decision Tracker' interface. On the left is a navigation pane with links to 'Home', 'Decision Tracker', 'Decision Contacts', 'Archive', 'Libraries', 'Shared Documents', 'Reports Library', 'Risk and Issues Dashboard', 'Recycle Bin', and 'All Site Content'. The main content area shows a welcome message and a summary table:

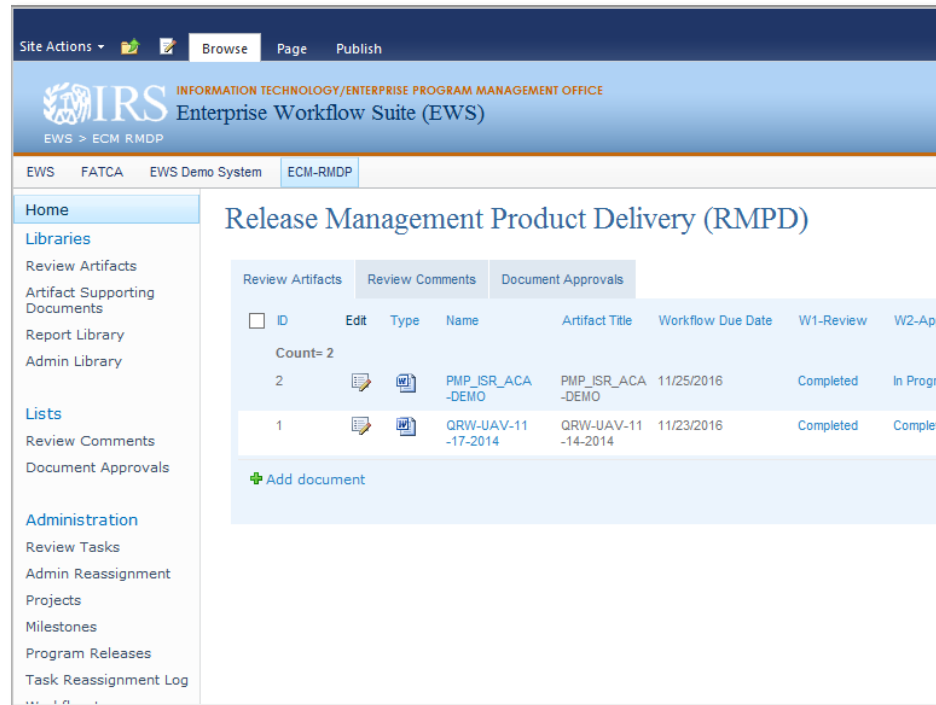
	Program
# of Approved Decisions	12
# of Denied Decisions	1
# of Pending Decisions	2

Below the table is an 'Add Decision' button. To the right is a form with sections for 'IDENTIFICATION' (Decision Type, Level, Venue), 'CATEGORIZATION' (Date, Approver, Closed Date), and 'INFORMATION' (Distribution Channels, Statement, Comments, Status).

Below the screenshot is a workflow diagram titled 'Workflow: New Decision Added'. It shows three lanes: 'System', 'Meeting Owner', and 'Distribution Approver'. The 'Meeting Owner' lane starts with a 'Complete required Decision data' task. The 'System' lane contains 'Set Status to "Awaiting Approval"' and 'Notify Distribution Approver' tasks. The 'Distribution Approver' lane ends with a red status icon. Arrows indicate the flow from the Meeting Owner task to the System tasks, and finally to the Distribution Approver task.

A client required a high-level of traceability that tracked decisions made by executives at key meetings to their ultimate dissemination across the enterprise. ADSI implemented a SharePoint solution that leveraged dynamic forms and workflows to create an auditable log of the enterprise's decisions that aligned with their overarching Knowledge Management strategy and Enterprise Architecture.

# Enterprise Workflow Suite (EWS)



A client had a number of specific yet unique review process or workflows, which were manually completed via email.

Management lacked a strategic process for reviewing the status, outcomes or workflows of an Artifact.

ADSI implemented an automated review processes for Artifacts across the enterprise that provided management reports on KPIs such as remaining tasks and time to completion.

# Quantifying EWS Return on Investment

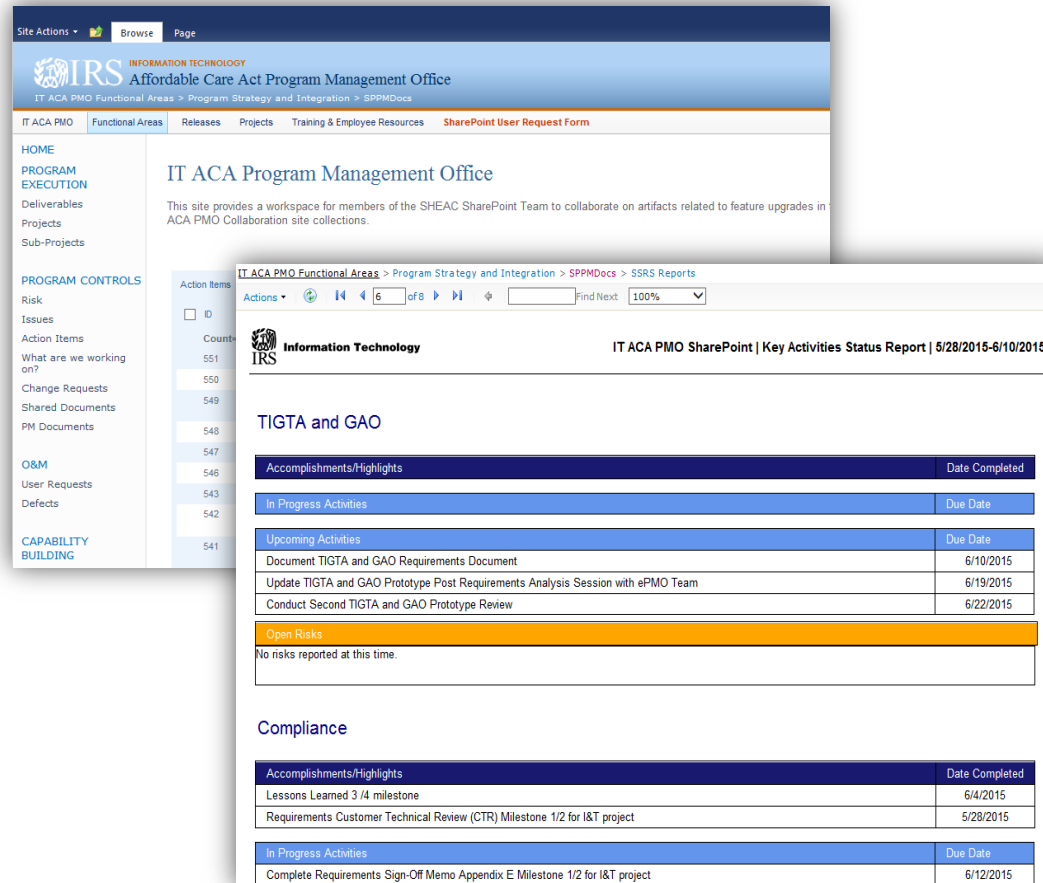
- EWS capably reduces the work of end users throughout the document review and approval process.
- Client reviews typically touch 11 – 18 FTEs acting as reviewers and document owners with multiple runs of the process to reach the desired participation level with approximately 200 documents per year.
- EWS eliminates unnecessary emails; local document storage and editing; continuous manual calls, reminders and reassignments and other inefficiencies.

\$60	Assumed rate of FTEs participating in document review or approval workflows.
15	Typical number of FTEs that participate in client's document review/approval process.
200	Typical number of client documents that complete a review or approval workflow annually (FY17 numbers and expected continually grow).
\$7200	Cost per day for a document review or approval workflow (8 hours/day).
8 - 14	Typical number of work hours saved using EWS to manage document review and approval workflows.
\$7200 - \$12600	Cost savings per document review or approval workflow completed via EWS.

**Expected Annual Cost Savings with EWS:**

**\$1.44M - \$2.52M**

# Program Planning: Automated Status Report



The screenshot displays the IT ACA Program Management Office SharePoint site. The left navigation pane includes sections for HOME, PROGRAM EXECUTION, PROGRAM CONTROLS, and CAPABILITY BUILDING. The main content area shows the 'IT ACA Program Management Office' title and a description. A 'Key Activities Status Report' for the period 5/28/2015-6/10/2015 is displayed, categorized under 'TIGTA and GAO'.

**TIGTA and GAO**

Accomplishments/Highlights	Date Completed
Document TIGTA and GAO Requirements Document	6/10/2015
Update TIGTA and GAO Prototype Post Requirements Analysis Session with ePMO Team	6/19/2015
Conduct Second TIGTA and GAO Prototype Review	6/22/2015

**Open Risks**  
No risks reported at this time.

**Compliance**

Accomplishments/Highlights	Date Completed
Lessons Learned 3 /4 milestone	6/4/2015
Requirements Customer Technical Review (CTR) Milestone 1/2 for I&T project	5/28/2015

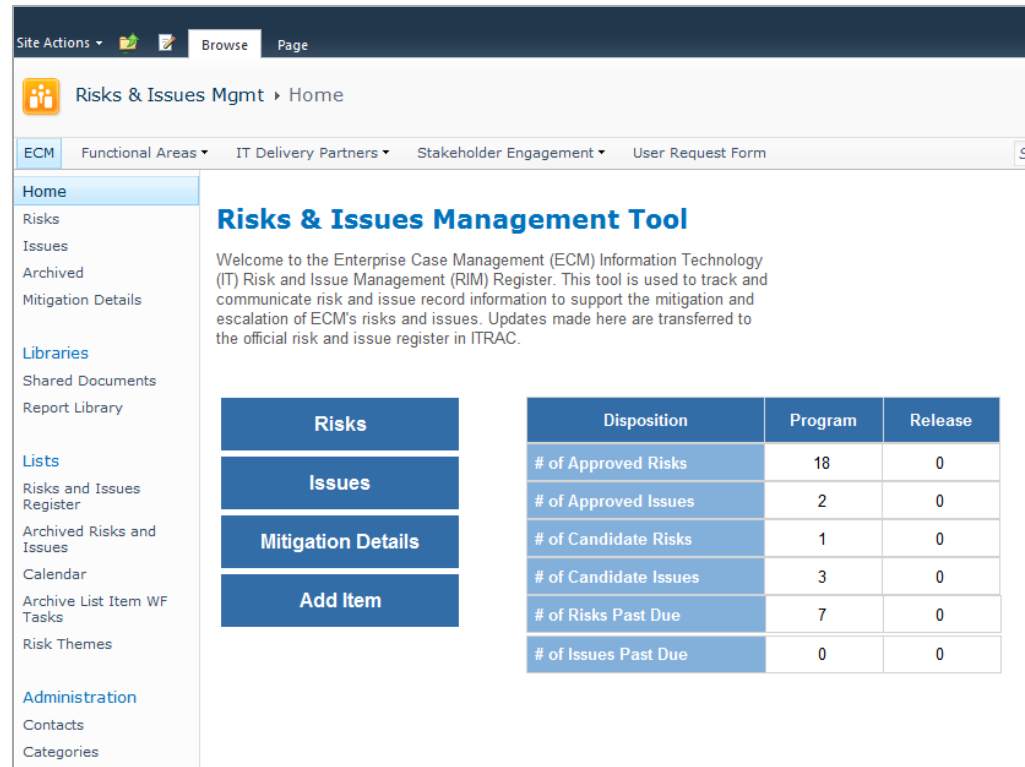
In Progress Activities	Due Date
Complete Requirements Sign-Off Memo Appendix E Milestone 1/2 for I&T project	6/12/2015

A client manually generated status reports for projects in PowerPoint, which was time consuming and error prone due to transcription mistakes.

ADSI implemented a SharePoint tool that integrated with Microsoft Project Schedule and automatically tracked project controls such as Issues, Risks, Activities, and reports. The tool generated automatic reports on project controls and process metrics within seconds with export capability to PDF, Tiff, Word and Excel formats.



# Example: SharePoint Business Solution



**Risks & Issues Management Tool**

Welcome to the Enterprise Case Management (ECM) Information Technology (IT) Risk and Issue Management (RIM) Register. This tool is used to track and communicate risk and issue record information to support the mitigation and escalation of ECM's risks and issues. Updates made here are transferred to the official risk and issue register in iTRAC.

	Disposition	Program	Release
<b>Risks</b>			
<b>Issues</b>			
<b>Mitigation Details</b>			
<b>Add Item</b>			
# of Approved Risks	18	0	
# of Approved Issues	2	0	
# of Candidate Risks	1	0	
# of Candidate Issues	3	0	
# of Risks Past Due	7	0	
# of Issues Past Due	0	0	

Management of Candidate Risks, Approved Risks and views bay any affected business unit in as much as 10 times less time than iTRAC

Integration between iTRAC and SharePoint while working in SharePoint day-to-day

Inclusion of all process participants with the no loss to the required access, permissions and security

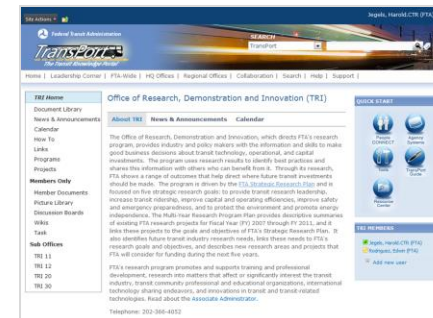
Archiving of Risks in SharePoint repository

Significant benefit of the overlay of EWS-FATCA workflows

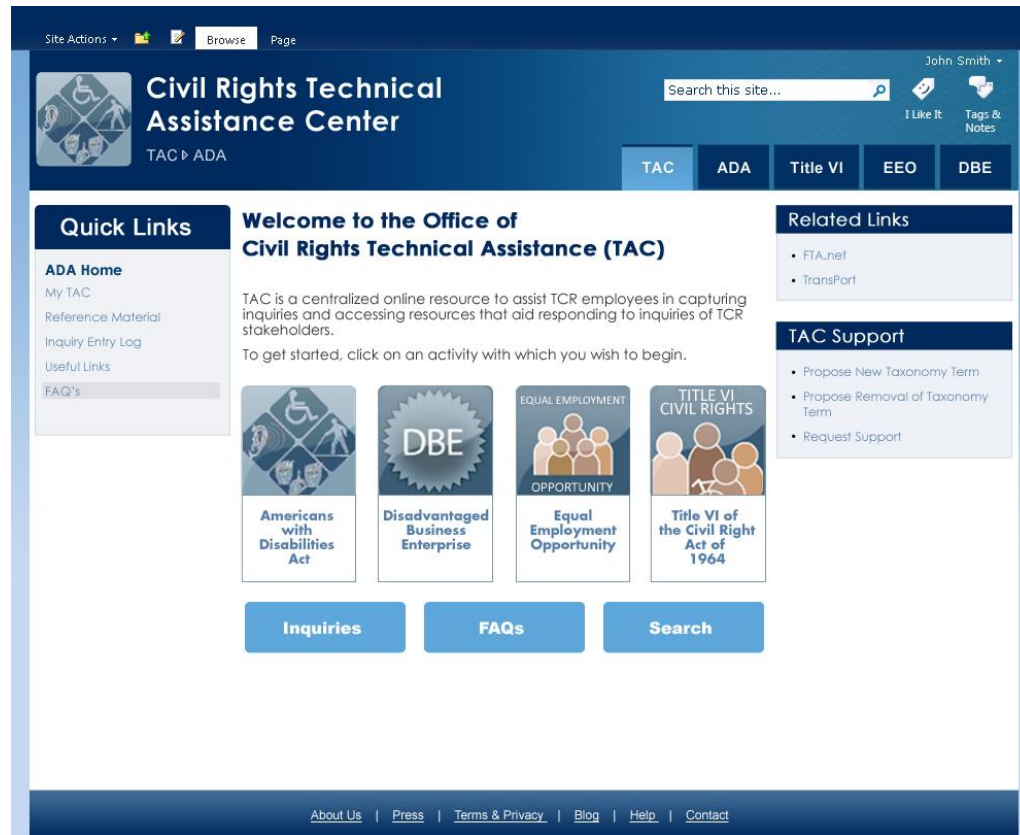
# Example: SharePoint Business Solution



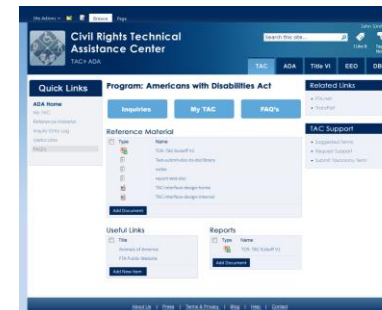
ADSI provided SharePoint site design and customization services for a national internal web-portal to enable a master event calendar, team collaboration spaces, knowledge management, enterprise search and connections to core services such as embedded webinar capabilities and video.



# Example: SharePoint Business Solution



ADSI developed a custom SharePoint solution to institute a knowledge management system in accordance with the agency's enterprise architecture that delivered consistent information to stakeholders, increased effectiveness and efficiency of internal business processes through automated workflows and enabled a culture of knowledge sharing and collaboration.



# WHAT WE DO FOR OUR CLIENTS



Support CMS's FISMA Security and Privacy programs



Developed a SharePoint knowledge management portal for the Federal Transit Administration (FTA)



IT Strategic Planning Management, Alignment and Implementation on Office 365



Conducted an Oracle Environment and Security Assessment



Support FMCSA's planning and implementing of Oracle Delphi and PRISM Financial Management Systems



Migration of the ACA PMO SharePoint and development of custom Workflows & Dashboards



Supported Schriever AFB with website development and hosting services



Providing IT Governance, policy, portfolio and enterprise architecture analysis support

**FEDERAL CONTRACT VEHICLES**

**Small Disadvantaged Business**  
**GSA 8(a) STARS GWAC II: GS-06F-0766Z**  
**DHS Eagle II Subcontractor (Core 4)**  
**OPM-IT Service BPA Subcontractor**  
**CIO-SP3 (Large) Subcontractor**  
**CMS SPARC Subcontractor**

**Primary NAICS Code**

541512

**Other NAICS Codes**

541511, 541491, 541513, 541519, 541611, 561421,  
611420

Aligned Development Strategies, Inc.  
1900 L Street, NW Suite 600  
Washington, DC 20036  
Phone: 202-659-2807  
Fax: 202-659-2810  
Website: [www.goADSI.com](http://www.goADSI.com)

**Dale James**

President & CEO

Email: [djames@goadsi.com](mailto:djames@goadsi.com)

**Raushaad D. Harvey**

Director, Marketing and Business  
Development

Email: [rharvey@goadsi.com](mailto:rharvey@goadsi.com)